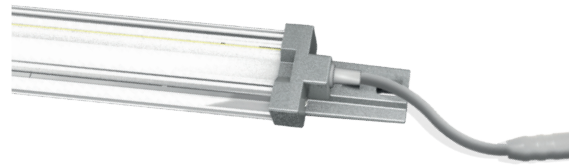


## TECHNICAL DATA

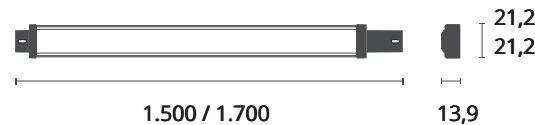
|                     |  |
|---------------------|--|
| Power               | 17 - 19 W  |
| Operating voltage   | 24 V DC  |
| Type of luminaire   | light strip  |
| LED Type            | SMD  |
| Control             | PWM  |
| Light efficiency    | up to 100 lm/W                                     |
| Colour consistency  | SDCM3  |
| Lifetime            | L80 B10 60.000 h @ 10°C<br>L80 B10 50.000 h @ 25°C |
| Ambient temperature | -30°C to +25°C                                     |
| Material            | aluminium  |
| Cascading           | no   |
| Warranty            | 5 Years  |



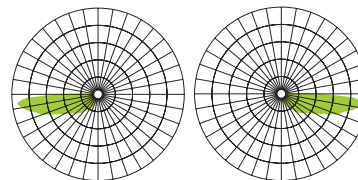
## TYPES



## ABMESSUNGEN (mm)



## BEAM ANGLE



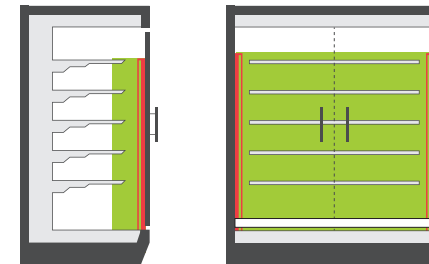
## HIGHLIGHTS

- 100% glare-free: the light remains invisible to the customer
- no lateral glare, regardless of the customer's position in front of the refrigerated display case
- perfect and unique light distribution on the front surface of the goods, with the maximum variance of 10 lux
- brilliant light with CRI 94
- installation options: via magnet or screw clip
- splash water-protected socket connectors on both sides

## APPLICATIONS SCL-G2-VLR

Mounted on the door frame (left or right), for illuminating the front of the products

- Refrigerated multideck cabinet (closed)
- Freezer
- Combi Freezer



## STANDARDS SCL-SERIES

IEC 60598-1-2014

IEC 60598-1-2014/AMD1:2017

IEC 60598-2-1-2020

IEC 60335-1-2010

IEC 60335-1-2010/AMD1:2013

IEC 60335-1-2010/AMD2:2016

IEC 60335-2-89:2010

IEC 60335-2-89:2010/AMD1:2012

IEC 60335-2-89:2010/AMD2:2015

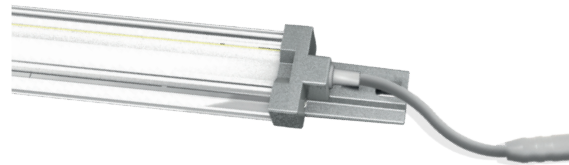
| Item number | Productcode          | Power | Light colour<br>Ledxon | CRI | Luminous<br>flux | Beam characteristic     | Length  | Weight  |
|-------------|----------------------|-------|------------------------|-----|------------------|-------------------------|---------|---------|
| 9100610     | SCL-G2-L1500-930-VLR | 17 W  | 3000 K                 | 94  | 1564 lm          | Door frame right / left | 1482 mm | 0,85 kg |
| 9100611     | SCL-G2-L1500-940-VLR | 17 W  | 4000 K                 | 94  | 1620 lm          | Door frame right / left | 1482 mm | 0,85 kg |
| 9100612     | SCL-G2-L1500-957-VLR | 17 W  | 5700 K                 | 94  | 1666 lm          | Door frame right / left | 1482 mm | 0,85 kg |
| 9100613     | SCL-G2-L1500-FM-VLR  | 17 W  | Fresh meat             | 90  | 1250 lm          | Door frame right / left | 1482 mm | 0,85 kg |
| 9100614     | SCL-G2-L1700-930-VLR | 19 W  | 3000 K                 | 94  | 1780 lm          | Door frame right / left | 1578 mm | 0,96 kg |
| 9100615     | SCL-G2-L1700-940-VLR | 19 W  | 4000 K                 | 94  | 1805 lm          | Door frame right / left | 1578 mm | 0,96 kg |
| 9100616     | SCL-G2-L1700-957-VLR | 19 W  | 5700 K                 | 94  | 1860 lm          | Door frame right / left | 1578 mm | 0,96 kg |
| 9100617     | SCL-G2-L1700-FM-VLR  | 19 W  | Fresh meat             | 90  | 1368 lm          | Door frame right / left | 1578 mm | 0,96 kg |

## TECHNICAL DATA

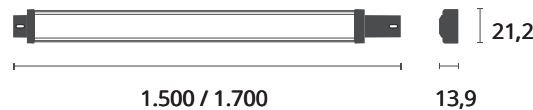
|                     |  |
|---------------------|--|
| Power               | 17 - 19 W  |
| Operating voltage   | 24 V DC  |
| Type of luminaire   | light strip  |
| LED Type            | SMD  |
| Control             | Bluetooth  |
| Light efficiency    | up to 100 lm/W                                     |
| Colour consistency  | SDCM3  |
| Lifetime            | L80 B10 60.000 h @ 10°C<br>L80 B10 50.000 h @ 25°C |
| Ambient temperature | -30°C to +25°C                                     |
| Material            | aluminium  |
| Cascading           | no   |
| Warranty            | 5 Years  |



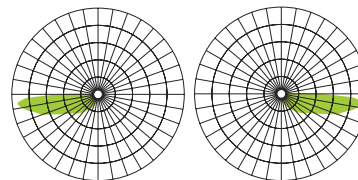
## TYPES



## DIMENSIONS (mm)



## BEAM ANGLE



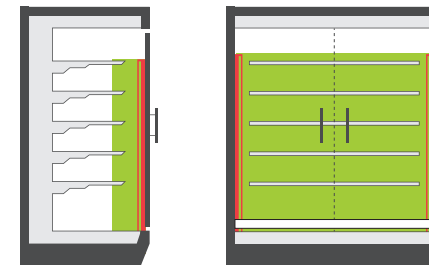
## HIGHLIGHTS

- no WLAN necessary
- Mesh-function
- timer
- group function
- scenes
- password protected
- no additional dimmer necessary

## APPLICATIONS SCL-G2-VLR - BT

Mounted on the door frame (left or right), for illuminating the front of the products

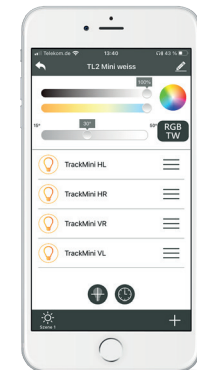
- Refrigerated multideck cabinet (closed)
- Freezer
- Combi Freezer



## LIGHTMANAGEMENT

Download our App: eyeconex LIGHTMANAGEMENT

- lighting control via BT



| Item number | Productcode                 | Power | Light colour<br>Ledxon | CRI | Luminous<br>flux | Beam characteristic      | Length  | Weight  |
|-------------|-----------------------------|-------|------------------------|-----|------------------|--------------------------|---------|---------|
| 9100628     | SCL-G2-L1500-940-FM-VLR-BT  | 17 W  | 4000 K - Fresh meat    | 94  | 1620 lm          | Door framet right / left | 1482 mm | 0,85 kg |
| 9100629     | SCL-G2-L1500-927-957-VLR-BT | 17 W  | 2700 K - 5700 K        | 94  | 1666 lm          | Door frame right / left  | 1482 mm | 0,85 kg |
| 9100631     | SCL-G2-L1700-940-FM-VLR-BT  | 19 W  | 4000 K - Fresh meat    | 94  | 1805 lm          | Door frame right / left  | 1578 mm | 0,96 kg |
| 9100633     | SCL-G2-L1700-927-957-VLR-BT | 19 W  | 2700 K - 5700 K        | 94  | 1860 lm          | Door frame right / left  | 1578 mm | 0,96 kg |

## IMPORTANT NOTES

All technical parameters apply to the entire product. Due to the complex manufacturing process of light emitting diodes, the specified typical LED parameters are only purely statistical values and may deviate.

The specified type of use must be strictly adhered to. Deviations may affect the stability of the fixture. Please observe the information in the mounting instructions before using the products.

|   |        |
|---|--------|
| Mercury content                         | 0,0 mg |
| Mercury-free                            | yes    |
| Professional disposal according to WEEE | yes    |

## NOTES TO THE LIFE TIME

Decisive factors for the life time are the ambient temperature and the operating temperature (Tc). Exceeding the permissible limits results in a substantial reduction of the lifetime and can even lead to the destruction of the products. The specified lifetime represents a statistical quantity.

## NOTES TO ELECTRICAL AND PHOTOMETRIC DATA

Colour coordinates according to CIE 1931

Rated ambient temperature:  $t_a = 25^\circ$

Measuring tolerance colour coordinates (x/y) +/- 0,005

Tolerance range of electrical / photometric data: +/- 10%

## DISCLAIMER

Changes and errors excepted. Due to the continuous development of all products, technical and design changes can occur at any time. Make sure that you always use the latest version of the data sheet.

Further product data as well as current information can be found at [www.lxpro.pl](http://www.lxpro.pl)

**5 YEARS**  
WARRANTY

