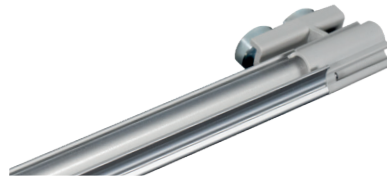


TECHNICAL DATA

Power	4 W - 11,2 W
Operating voltage	24 V DC
Type of luminaire	Light strip
LED Type	SMD
Control	Bluetooth
Lifetime	L80 B10 55.000 h @ 10°C L80 B10 45.000 h @ 25°C
Ambient temperature	-30°C to +25°C
Material	Aluminium
Cascading	no
Warranty	5 Years

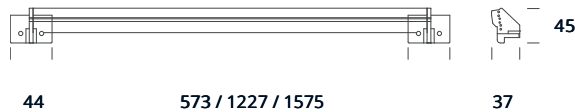


TYPES

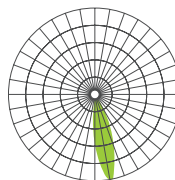


aluminium

DIMENSIONS (mm)



BEAM ANGLE



LIGHTMANAGEMENT



This product is controllable by eyeconex LICHTMANAGEMENT

App download:



HIGHLIGHTS

- Mesh function
- Timer
- Group function
- Scene settings
- RGB-Light color adjustable
- Password protected
- No additional dimmer necessary

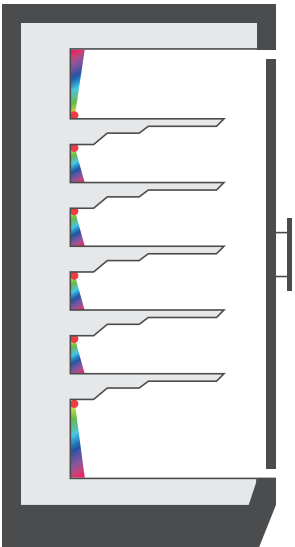
ARTICLE OVERVIEW

Part no.	Productcode	Wattage	Colour	Beam angle	Length	Weight
9100731	CBL-L600-RGB-K-BT	4 W	RGB	Wallwasher	L573 mm	0,30 kg
9100732	CBL-L1200-RGB-K-BT	9 W	RGB	Wallwasher	L1227 mm	0,47 kg
9100733	CBL-L1500-RGB-K-BT	11,2 W	RGB	Wallwasher	L1575 mm	0,60 kg
9100734	CBL-L600-RGB-UB-BT	4 W	RGB	Wallwasher	L573 mm	0,30 kg
9100735	CBL-L1200-RGB-UB-BT	9 W	RGB	Wallwasher	L1227 mm	0,47 kg
9100736	CBL-L1500-RGB-UB-BT	11,2 W	RGB	Wallwasher	L1575 mm	0,60 kg

ACCESORIES

Part number	Article description
9100737	Wallwasher extension cable grey, Tyco 4m male/female

PLACEMENT



APPLICATION EXAMPLE



IMPORTANT NOTES

All technical parameters apply to the entire product. Due to the complex manufacturing process of light emitting diodes, the specified typical LED parameters are only purely statistical values and may deviate.

The specified type of use must be strictly adhered to. Deviations may affect the stability of the fixture. Please observe the information in the mounting instructions before using the products.

Mercury content	0,0 mg
Mercury-free	yes
Professional disposal according to WEEE	yes

NOTES TO THE LIFE TIME

Decisive factors for the life time are the ambient temperature and the operating temperature (Tc). Exceeding the permissible limits results in a substantial reduction of the lifetime and can even lead to the destruction of the products. The specified lifetime represents a statistical quantity.

NOTES TO ELECTRICAL AND PHOTOMETRIC DATA

Colour coordinates according to CIE 1931

Rated ambient temperature: $t_a = 25^\circ$

Measuring tolerance colour coordinates (x/y) +/- 0,005

Tolerance range of electrical / photometric data: +/- 10%

DISCLAIMER

Changes and errors excepted. Due to the continuous development of all products, technical and design changes can occur at any time. Make sure that you always use the latest version of the data sheet.

Further product data as well as current information can be found at www.lxpro.pl

5 YEARS
WARRANTY

